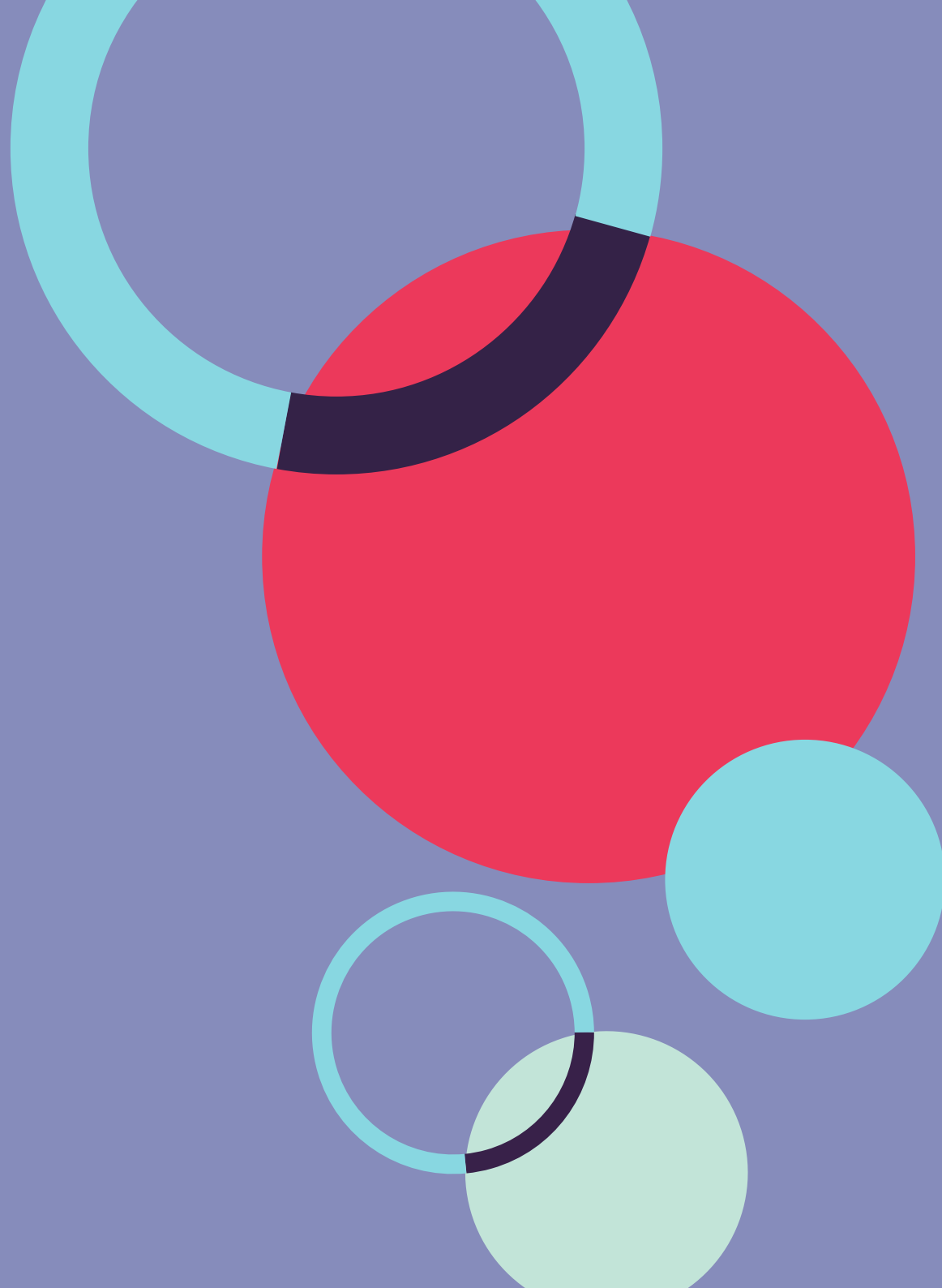




NEW-SU

the referendum





a new union

Introducing the University of Cambridge Students Union, or more informally known as, Cambridge SU.

Cambridge SU, a brand new students' union, comes from a simple suggestion; what does better postgraduate representation look like? From this grew ideas and plans to not only improve postgraduate representation but the experience for all students at Cambridge University. It has taken a lot of time and work to get here, but we hope you'll be as excited as we are we present what the future of student representation could, and hopefully will, look like.



vision

We foresee Cambridge SU as a groundbreaking organisation that leads the way in representation for all students, both undergraduates and postgraduates. Cambridge SU will replace two current students' unions, and be a single union for all students. In combining our expertise, we will ensure that all students, regardless of level of study, are represented, supported and have their voice heard across the University of Cambridge.

In addition to this, we will continue to champion and elevate the voices of those with protected characteristics who are not always heard across the university. No matter your level of study, background or the marginalisation you may experience, Cambridge SU will be a union that fights for you.

highlights



IMPROVED

INTRODUCING

MORE

Postgraduate
Representation

A new BME
sabbatical
Officer

Support and
opportunities
for you!

..... [CAMBRIDGE **SU**]

In our new structures we are further proposing two additional members of staff that will be focussing exclusively on welfare and activities; we know these are two areas that are really important to students. The creation of a new single students' union will give us the opportunity to offer these provisions to you!

IMPROVED

postgrad representation

Right at the centre of this project was the commitment to improving postgraduate representation. We have ensured that postgraduates are not just an add on to the new union, but are embedded in its very creation. In this, current structures have been amended, re-thought and where necessary, disregarded.

Postgraduates can expect to see:

- Joint undergraduate & postgraduate Presidents
- Creation of a postgraduate Access, Education & Participation Officer
- Restructured forums for reps to meet the needs of undergraduates & postgraduates
- Welfare support that is intrinsically linked with the broader community
- Balanced and equal representation of undergraduate and postgraduate Sabbatical and Student Trustees

We have listened to postgraduates and feel we have implemented changes that will ensure that alongside a culture shift, there are processes and spaces in place that ensure postgraduates are considered as equals to undergraduates in the union.

Let's build a union that embraces and acknowledges the different experiences of undergraduates and postgraduates.

INTRODUCING

BME sabbatical officer

Cambridge University has a long way to go when it comes to its inclusion and representation of BME students, academics and their experiences. We want to introduce a new sabbatical role that is a full time, paid role, exclusively dedicated to to representation and support of BME students at Cambridge University.

So, what would they do?

- The BME Officer will lead the new union in campaigning and representation work for and on behalf of BME students at the University of Cambridge. They will also lead and facilitate the BME Campaign.
- As the primary representative of BME students at Cambridge, they will ensure that the needs of BME students are at the heart of Cambridge SU's work, whether in terms of anti-racism campaigning, BME access or tackling attainment gaps.

MORE

for you

What do we mean when we say more for you?

To put it simply, we will have:

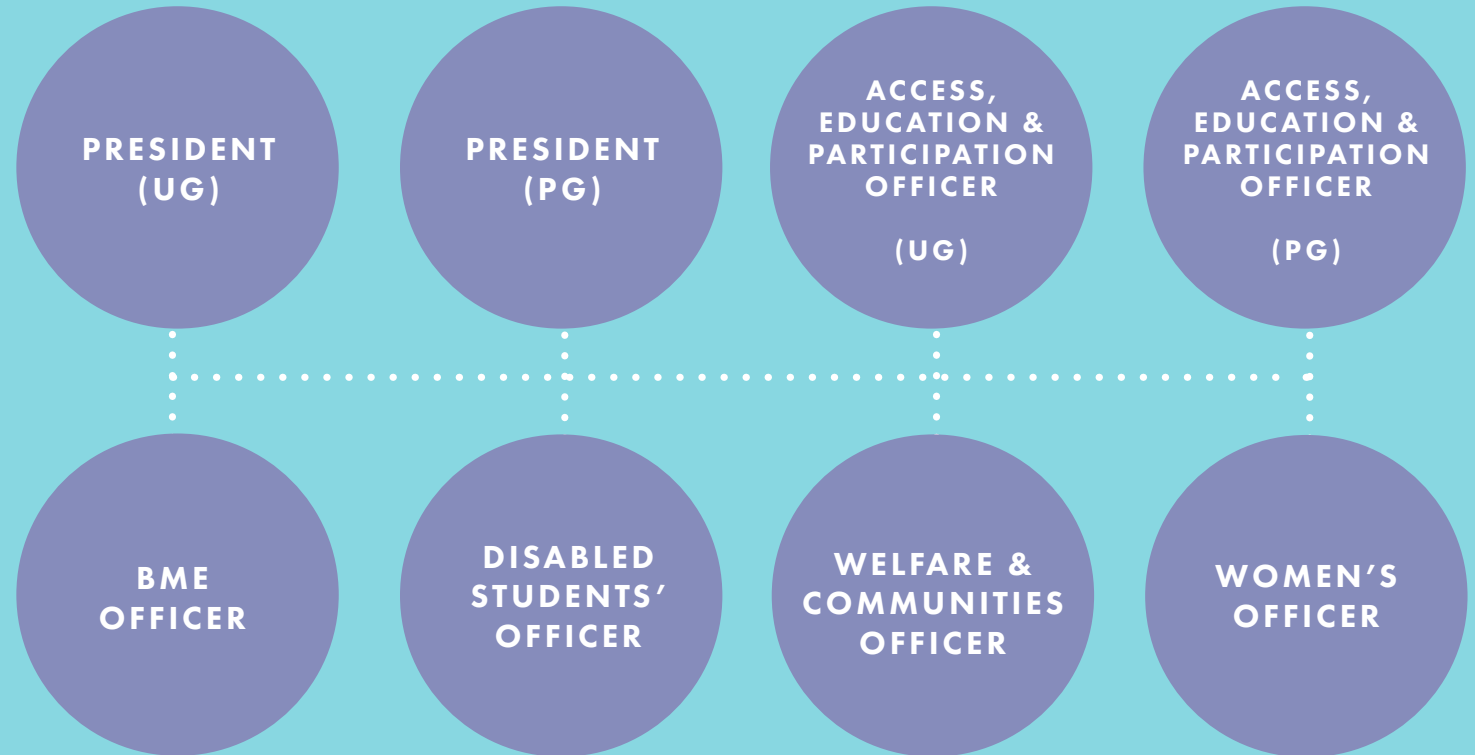
- Staff support for reps and campaigns with an Insight and Campaigns Coordinator, Events Coordinator & Student Rep Coordinator
- Introduction of a Student Activities Coordinator to support student clubs and societies
- A more efficient and well resourced Students' Union

...available to you! In both unions coming together, we will be working towards a shared common goal.



structures

SABBATICAL OFFICERS



WHY THIS TEAM MAKE UP?

The proposed sabbatical officer structure is designed to maximise the representation of different groups within the university. It's important that the new union effectively represents both undergraduates and postgraduates which is why we've proposed a postgraduate president and an undergraduate president, as well as an undergraduate access and academic affairs officer and a postgraduate access and academic affairs officer. This ensures that there will always be at least two postgraduate and at least two undergraduate officers in the sabbatical team. Liberation is at the heart of the unions work and so increasing the number of liberation-focused sabbatical officers is an important aspect of the proposed changes.

structures

SABBATICAL OFFICERS

PRESIDENT (UG)

.....

Alongside the PG President, the UG President will lead the students' union and sabbatical team and be the primary representative for undergraduate students within the University, sitting on various senior committees such as University Council. They will be the public face of the union and take the lead in engaging students with the union's work. They will be responsible for engaging with JCR Presidents and helping them tackle the issues they face within their colleges.

By having one UG and one PG President, we will ensure equal representation of both UGs and PGs within the new union.

PRESIDENT (PG)

.....

Alongside the UG President, the PG President will lead the students' union and sabbatical team and be the primary representative for postgraduate students within the University, sitting on various senior committees such as University Council. They will be the public face of the union and take the lead in engaging students with the union's work. They will be responsible for engaging with MCR Presidents and helping them tackle the issues they face within their colleges.

By having one UG and one PG President, we will ensure equal representation of both UGs and PGs within the new union.

ACCESS, EDUCATION & PARTICIPATION OFFICER (UG)

.....

The experiences of accessing Higher Education and then thriving whilst at Cambridge are fundamentally linked and our sabbatical structures should reflect this. We're proposing introducing two officers with the same portfolio, focussing on access, education and participation in their different forms at both the undergraduate and postgraduate level.

The creation of a role focused on tackling access issues within all aspects of the undergraduate education will ensure that improving access to university is at the heart of Cambridge SU's mission. Many aspects of education policy are fundamentally access issues and this new role recognises the inextricable links between the two.

The Access, Education and Participation Officer (UG) will focus on tackling the barriers to application and admission for underrepresented groups and be the lead officer for the Shadowing Scheme. They will seek to improve access post-admission in the financial, pastoral and academic sense: pushing for greater financial support, better educational practices and more inclusive teaching. They will coordinate undergraduate academic reps and take the lead on responding to national policy issues within Higher Education, such as fees, maintenance grants and TEF.

Candidates would be expected to have personal experience and understanding of access at Cambridge.

ACCESS, EDUCATION & PARTICIPATION OFFICER (PG)

.....

The experiences of accessing Higher Education and then thriving whilst at Cambridge are fundamentally linked and our sabbatical structures should reflect this. We're proposing introducing two officers with the same portfolio, focussing on access, education and participation in their different forms at both the undergraduate and postgraduate level.

Access to education at the postgraduate level has often been overlooked and the introduction of this new role seeks to rectify this issue, as well as ensuring that proper attention is given to the problems faced by postgraduates in their educational experiences and academic careers.

The Access, Education and Participation Officer (PG) will be the lead officer for coordinating postgraduate academic reps and improving student representation within faculties and departments. They will support postgraduates with supervisor problems, help them to understand their rights as students and campaign for improved teaching opportunities. They will also focus on improving access into education at the University of Cambridge, focusing on new initiatives and developing good practice for postgraduate widening participation. They will be the key liaison point with UCU & in general on issues that postgraduate students experience in their teaching work.

Candidates would be expected to have personal experience and understanding of access at Cambridge

BME OFFICER

.....

The BME Officer will lead the new union in campaigning and representation work for and on behalf of BME students at the University of Cambridge. They will also lead and facilitate the BME Campaign.

As the primary representative of BME students at Cambridge, they will ensure that the needs of BME students are at the heart of Cambridge SU's work, whether in terms of anti-racism campaigning, BME access or tackling attainment gaps.

Both undergraduates and postgraduates can run for this role.

DISABLED STUDENTS' OFFICER

.....

The Disabled Students' Officer will lead the new union in campaigning and representation work for and on behalf of the disabled students at the University of Cambridge.

They will also lead the Disabled Students' Campaign and work on issues such as inclusive learning and teaching, awareness-raising of unseen disabilities - such as mental health conditions - and working to make the university a more accessible place for all.

Both undergraduates and postgraduates may run for this role.

WELFARE & COMMUNITY OFFICER

.....

Welfare is at the heart of a students' union. The new Welfare and Community Officer is a campaigning role focused on the fight for students' rights and the needs of the wider community. Not only will they campaign and spearhead initiatives that improve the wellbeing of all students, they will also link up student campaigns to those in the local and national community.

From Living Wage campaigns to local area developments, this role will help students connect with the city they live in and ensure the University acts with the interests of the wider Cambridge community in mind. Both undergraduates and postgraduates may run for this role.

WOMEN'S OFFICER

.....

The Women's Officer represents women and non-binary students at Cambridge and facilitates the Women's Campaign. They work to achieve material changes through feminist campaigning, whether that be to combat sexual violence, tackle gendered disparities such as gender pay gaps, or work with the local community on issues such as women's homelessness.

Both undergraduates and postgraduates may run for this role.

structures

EXEC



The Executive is a group of elected students that work alongside the eight elected sabbatical officers in ensuring the union work for and is relevant to Cambridge students.

They shall be responsible for:

- Campaigns that promote and protect the interests of the Members
- The implementation of Policy set by the Student Council
- The distribution of budget and funds to campaigns

There is a total of 22 representative on the Executive committee, in this new make up we have ensured that the representation of undergraduates and postgraduates is balanced. Where a campaign has two representatives on the Executive committee, one of these must be undergraduate and one postgraduate.

structures

EXEC

SABBATICAL OFFICERS

President UG

President PG

Access, Education & Participation
Officer UG

Access, Education & Participation
Officer PG

BME Officer

Disabled Students' Officer

Welfare & Community Officer

Women's Officer

CAMPAIGN REPRESENTATIVES

BME Campaign

Class Act Campaign x2

Disabled Students' Campaign

Ethical Affairs Campaign x2

International Students'
Campaign x2

LGBT+ Campaign x2

Women's Campaign

PORTFOLIO ROLES

Part-Time Students' Officer

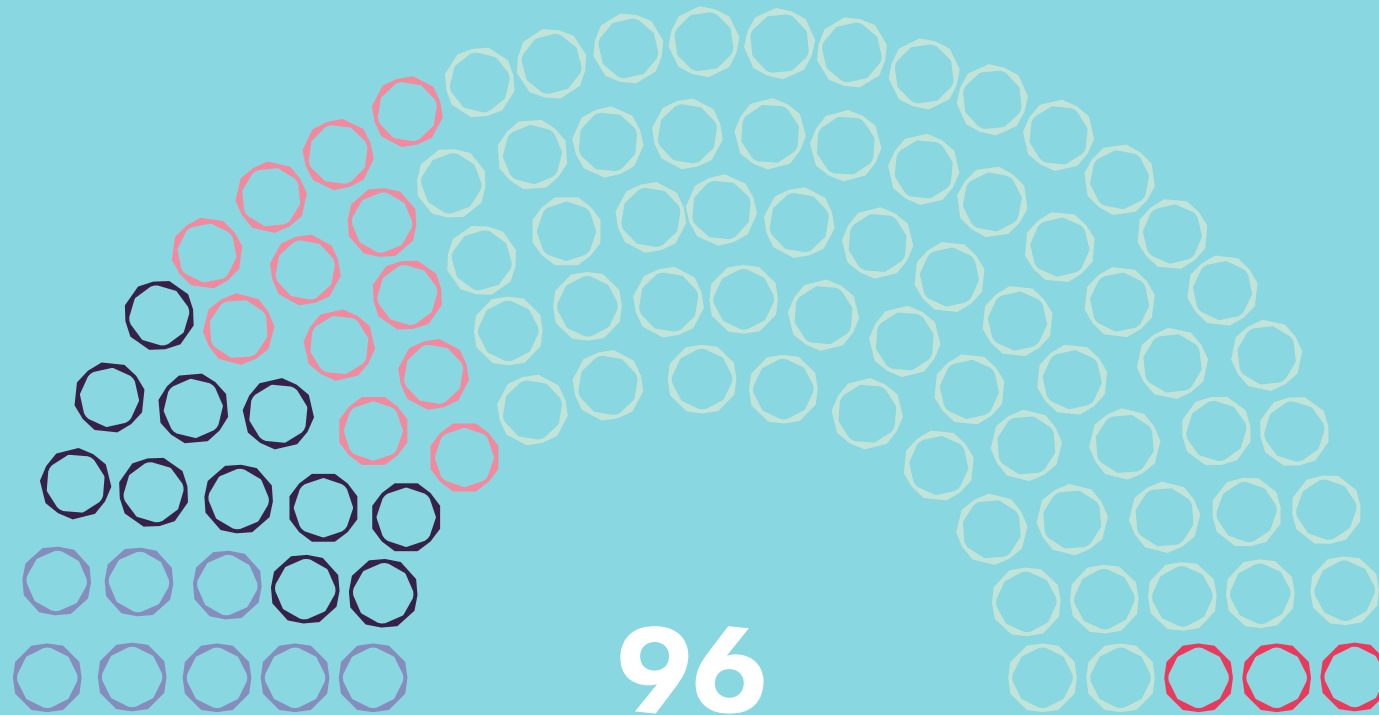
Mature Students' Officer

Families Officer



structures

COUNCIL



● 8 Sabbatical Officers ● 11 Campaign Representatives ● 12 Schools Reps ● 62 College Reps ● 3 Exec Members

structures

COUNCIL

SABBATICAL OFFICERS

President (UG)

President (PG)

Access, Education & Participation
Officer (UG)

Access, Education & Participation
Officer (PG)

BME Officer

Disabled Students' Officer

Welfare & Community Officer

Women's Officer

CAMPAIGN REPRESENTATIVES

BME Campaign

Class Act Campaign x2

Disabled Students' Campaign

Ethical Affairs Campaign x2

International Students'
Campaign x2

LGBT+ Campaign x2

Women's Campaign

SCHOOLS REPS

12 Reps

COLLEGE REPS

62 Reps

3 EXEC MEMBERS

Part-Time Students' Officer

Mature Students' Officer

Families Officer

structures

CAMPAIGNS

**BME
CAMPAIGN**

**CLASS ACT
CAMPAIGN**

**DISABLED
STUDENTS'
CAMPAIGN**

**ETHICAL
AFFAIRS
CAMPAIGN**

**INTERNATIONAL
STUDENTS'
CAMPAIGN**

**LGBT+
CAMPAIGN**

**WOMEN'S
CAMPAIGN**

WHAT'S NEW?

- Closer links with Sabbatical Team to ensure that campaigns are at the heart of Cambridge SU's work
- Staff support for campaigns with an Insight & Campaigns Coordinator and an Events Coordinator
- Better financial support
- Undergraduate and Postgraduate structural co-leadership

structures

ACADEMIC/COLLEGE FORUMS

Academic Forum is run throughout the year. It's a space for Academic Reps to meet one another, to bring up issues that are of concern to the students they represent, to share best practice, and to discuss the wider issues surrounding education in Cambridge. Half of the meeting is currently given over to issues the reps themselves want to raise and then the other half centres around a discussion on a particular topic, such as Study Skills or Libraries. As Faculty Reps do not sit on SU Council, this is the primary contact they have with the Student Union and the forum is encouraged to write policy for Council to be proposed by the School Reps who do sit on Council.

College Forum is run throughout the year, hosted by a different college each time. It's a space for JCR and MCR Presidents and Vice-Presidents/External Officers to come together to discuss issues that are of concern to the students of their colleges, share examples of best practice, and to discuss wider issues in the collegiate university.



WHAT'S NEW?

- Organised and scheduled with needs of both Undergrad and Postgrad students in mind
- Possibility for Undergrad and Postgrad specific forums